



2019

CORPORATE
BROCHURE



CONTENTS

01	CNH INDUSTRIAL	02
02	INNOVATION & TECHNOLOGY	10
03	SUSTAINABILITY	28
04	AGRICULTURE	36
05	CONSTRUCTION	44
06	COMMERCIAL & SPECIALTY VEHICLES	50
07	POWERTRAIN	64
08	FINANCIAL SERVICES	68
09	GLOBAL FOOTPRINT	72





CNH INDUSTRIAL

With a wealth of globally respected brands whose history goes back to 1842, CNH Industrial has shaped the industries of machines for agriculture, construction, commercial & specialty vehicles and powetrain sectors, and is today one of the top capital goods companies in the World.

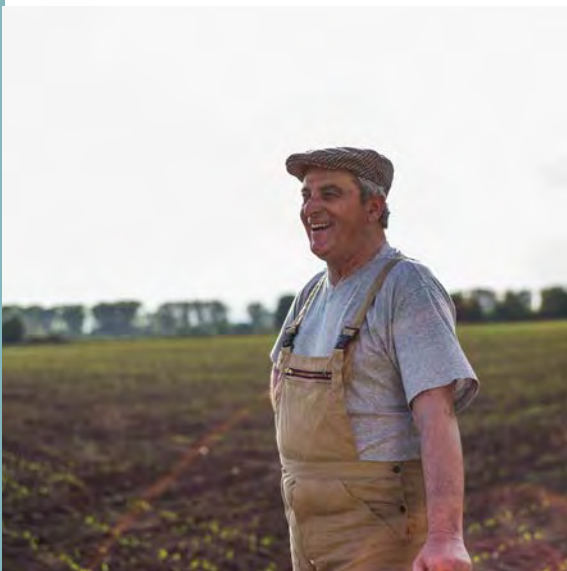
The Company is confronted with an environment that is changing constantly. Today's and tomorrow's challenges require a strong entrepreneurial approach to seize all the opportunities that may arise. CNH Industrial is focused on becoming more flexible and on responding faster to the different customers' needs while keeping a strong focus on innovation.

OUR VOCATIONS

BE THE BEST CAPITAL
GOODS COMPANY



BE AGILE AND
ENTREPRENEURIAL



BE CUSTOMER CENTRIC



BE INNOVATIVE

ABOUT US

We design, manufacture and sell the world's leading machines for agriculture, construction, commercial and specialty vehicles as well as engines for this equipment and for marine and power generation applications. We also provide comprehensive solutions for financing and aftermarket services.

With a presence in 180 countries, we are uniquely diversified across segments and geographies.

CNH Industrial is focused on expanding its presence in high-growth markets, including through joint ventures.

The Company aims to be a global leader in all its business segments. It is a pioneer in efficient machinery that enables other sectors of the global economy to operate at maximum potential, and it achieves this by harnessing new technologies and through its vast market reach and solid enterprise culture.

IN NUMBERS

1

COMPANY

12

BRANDS

54

R&D CENTERS

64,625

EMPLOYEES

66

MANUFACTURING PLANTS

\$29.7 BILLION

CONSOLIDATED REVENUES

180

NATIONAL MARKETS

\$1.1 BILLION

R&D SPENDING

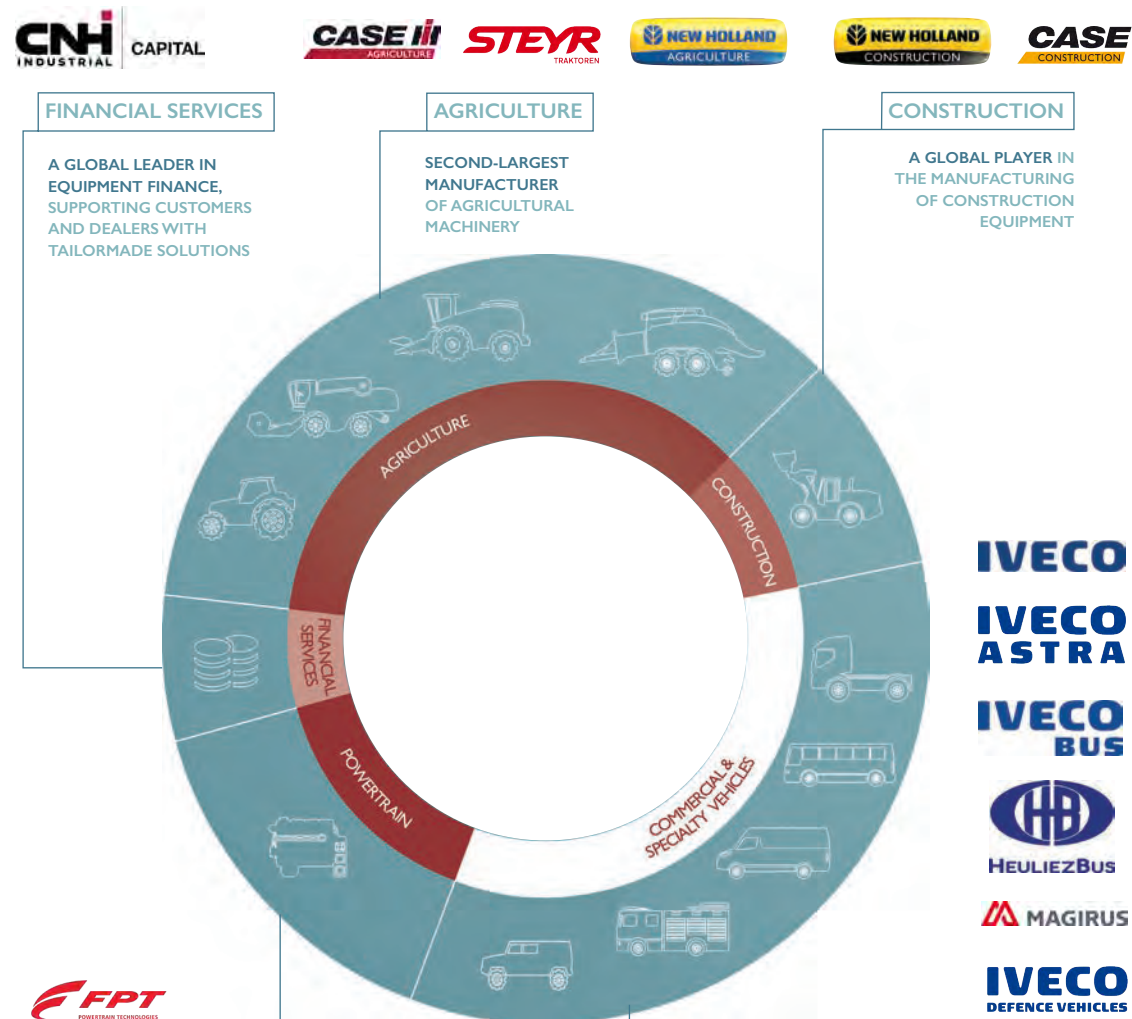
Note: all figures provided herein are on a US GAAP \$ basis and as of December 31, 2018 unless otherwise noted.

SEGMENTS & KEY FEATURES

We operate through five global segments: Agriculture, Construction, Commercial & Specialty Vehicles, Powertrain and Financial Services.

These segments are supported by global functions

addressing key synergies and development areas: an increased customer focus and further expansion in evolving market key trends such as electrification, digitalization, automation and servitization.



CNH INDUSTRIAL'S COMMON SHARES ARE LISTED ON THE NEW YORK AND MILAN STOCK EXCHANGE



OUR HERITAGE

CNH Industrial's expertise spans industries and continents, building upon a great tradition of historic achievements and significant contributions to the development of technological know-how in the industries in which it operates.

Driven by the entrepreneurial spirit of these industrial titans, CNH Industrial brings forth a rich history that dates back more than 175 years.

1842

CASE



Jerome Increase Case



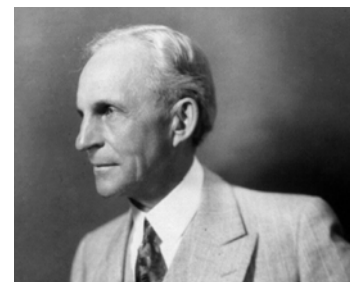
Abe Zimmerman

1899

FIAT



Conrad Dietrich Magirus



Henry Ford

1999

CNH GLOBAL



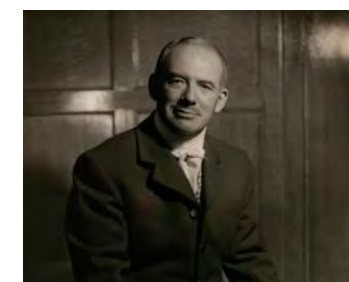
Giovanni Agnelli



Louis Heuliez

2011

FIAT INDUSTRIAL



David Brown



Leon Claeys

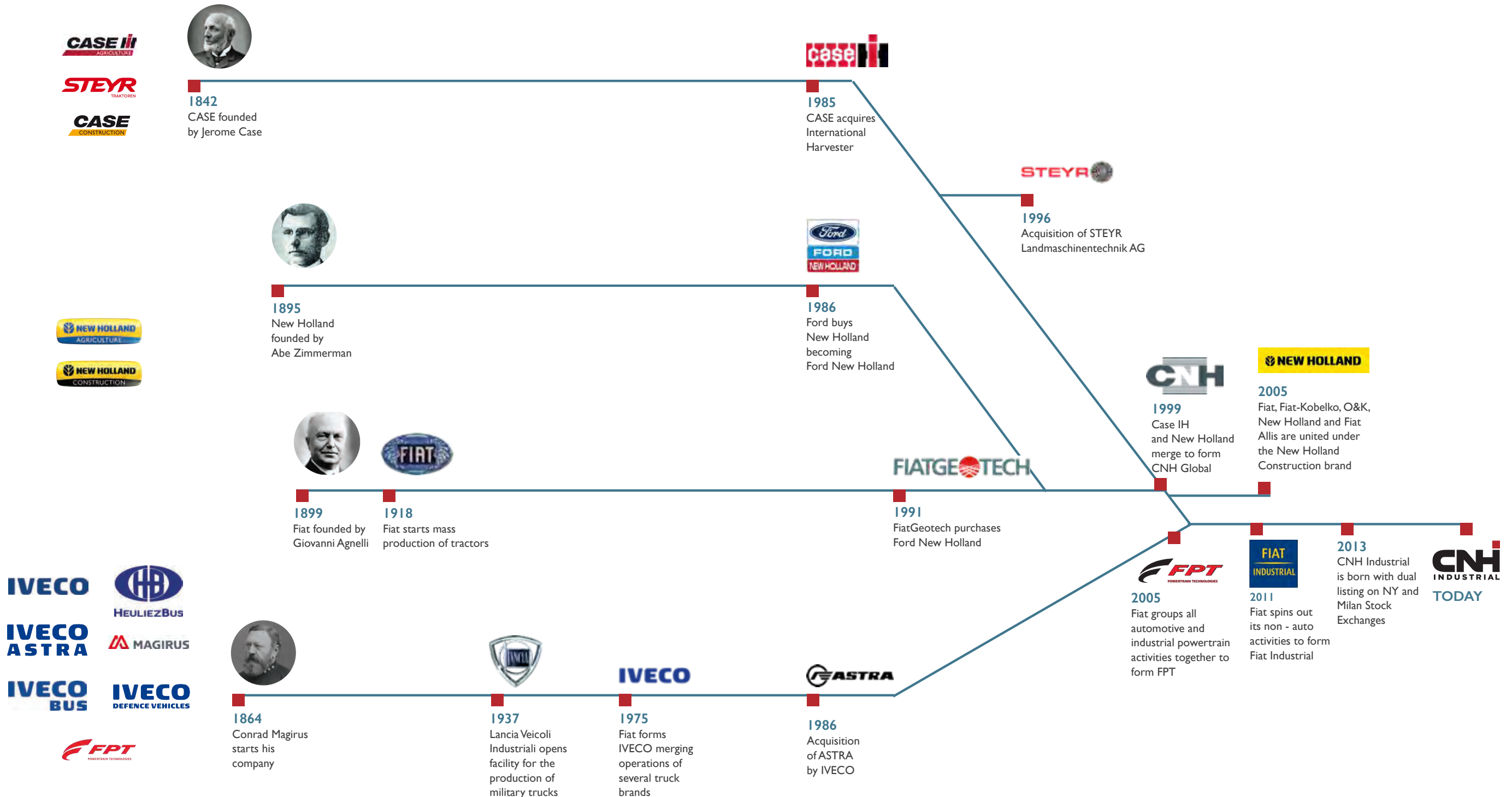
2013

CNH INDUSTRIAL N.V.

TODAY

A HISTORY OF SUCCESSFUL ENTREPRENEURS

The Company's strength is rooted in the heritage, knowledge and experience brought forth by its founders and entrepreneurs and fostered throughout generations. Pioneers such as Giovanni Agnelli, Abe Zimmerman, Jerome Case and Conrad Magirus have shaped the history of their sectors, contributing to industry firsts and innovation going back to 1842.





INNOVATION & TECHNOLOGY

“

OUR INDUSTRY IS EXPERIENCING AN EVER ACCELERATING RATE AND GROWING MAGNITUDE OF CHANGE, FUELED BY TRENDS SUCH AS ELECTRIFICATION, DIGITALIZATION, AUTOMATION AND SERVICIZATION.

WE ARE COMMITTED TO INNOVATING AT THE HIGHEST LEVELS TO LEAD IN THE SECTORS IN WHICH WE OPERATE.

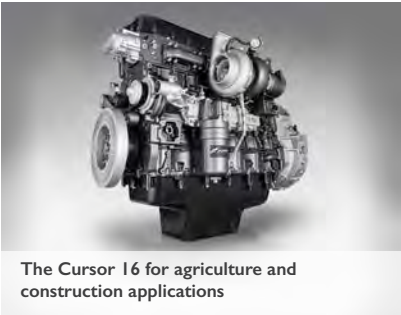
”

A MULTI-POWER APPROACH

Since building its first diesel truck engine in 1908, FPT Industrial has endeavored to increase the efficiency of its products. In the past 15 years, amid growing concerns over emissions and noise pollution, it has also invested in finding new ways to power them. In 2011, the brand launched one of its breakthrough technologies, the patented HI-eSCR (high efficiency Selective Catalytic Reduction) system, which offers a unique solution to meeting stringent emission standards.

“Our task is to understand which new technologies we can realistically use without compromising engine efficiency.” comments Giancarlo Dellora, FPT Industrial’s Head of

Research in Powertrain Innovation,“Alternative fuels is a broad term that includes natural gases (such as methane and biomethane), propane, hydrogen and alcohols (such as ethanol and butanol), and also electricity in the form of fuel cells that utilize hydrogen. All of these options form part of the range of alternative propulsion concepts, and alongside BEV solutions (battery electrical vehicles), they will have a role to play in the future alternative-fuels landscape. It’s about finding the right mix of technologies for different applications.”



CLEAN DIESEL

Best in class advanced solutions in almost all segments:

- 13 registered in-house patents on Stage V and Selective Catalytic Reduction (SCR) technologies
- SCR, a highly efficient system that can achieve a reduction of up to 98%
- Currently meeting Stage V and Euro VI Step D requirements
- Ongoing research to further increase efficiency and reduce CO₂ emissions
- Featuring improved Total Cost of Ownership (TCO) with longer maintenance intervals

NATURAL GAS

- Natural Gas is a key step towards future zero CO₂ emission propulsions
- Biomethane solutions for all the segments
- Research on alternative fuels/ biofuels for the lowest possible CO₂ emissions

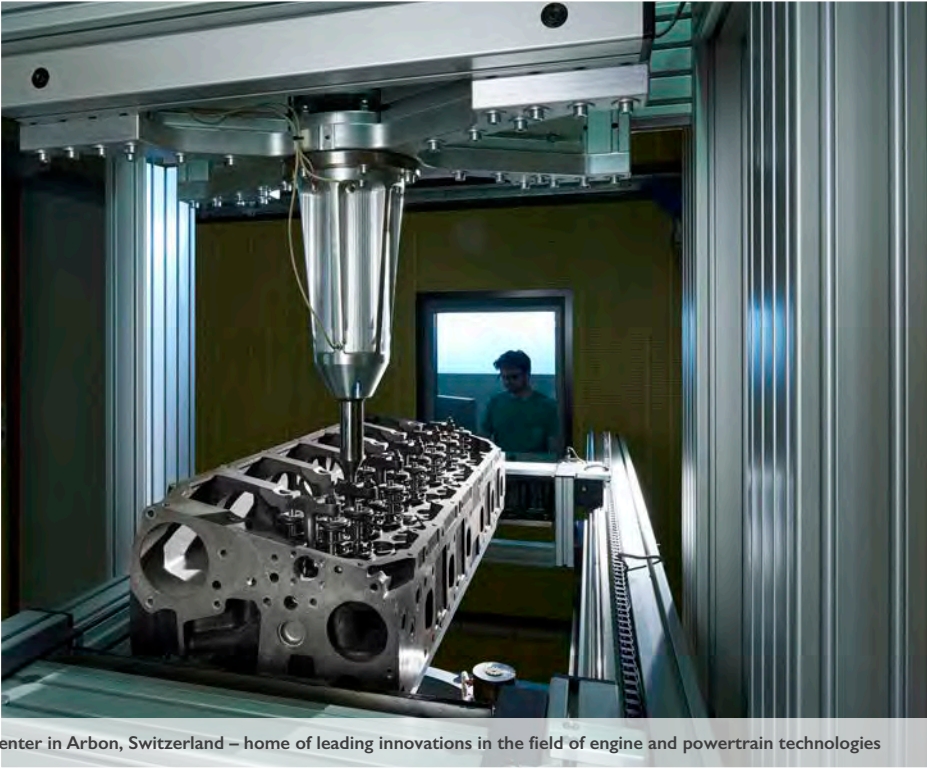
ELECTRIFICATION

Dedicated e-powertrain organization focused on the execution of projects:

- New e-axles, diesel-hybrid and gas-hybrid powertrains
- Fully electric propulsions as long-term solutions for zero-emission vehicles, mainly for urban missions
- Hydrogen fuel-cell propulsion as a solution for long distance missions

POWERTRAIN INNOVATIONS

1903 Fiat produces its first truck engine, a 6.37 liter with four cylinders and 24 hp	1908 Fiat production of industrial diesel engines begins	1934 The company patents direct fuel injection technology for diesel engines, still in use today	1938 First manufacturer to use a turbocharger on diesel truck engines	1999 The first manufacturer to introduce its patented Common Rail Technology on Industrial Engines for Light Commercial Vehicles (LCV)
2000s FPT develops key technologies such as the Multiair system, the second generation Multijet, the Dual Dry Clutch Transmission and SCR Selective Catalytic Reduction technologies	2002 Production of Compressed Natural Gas engines for light commercial vehicles starts	2016 Launch of the Cursor 9 NG engine, the world’s first 9 liter natural gas engine	2017 Launch of the Cursor 13 NG, the most powerful 100% natural gas engine on the market	2018 Presentation of the Cursor X engine prototype



The FPT Industrial Research & Development center in Arbon, Switzerland – home of leading innovations in the field of engine and powertrain technologies

NATURAL GAS IN COMMERCIAL VEHICLES AND BUSES

PROVEN EXPERTISE IN NATURAL GAS POWERTRAIN TECHNOLOGIES

CNH Industrial's brands have a long history in developing and commercializing natural gas powered vehicles, and they are the market leaders in this area.

Since pioneering natural gas technology some 20 years ago, FPT Industrial has produced more than 40,000 natural gas engines, running on both compressed natural gas (CNG) and liquefied natural gas (LNG).

There are about 28,000 natural gas-powered vehicles from CNH Industrial's truck and bus brands IVECO and IVECO BUS on the road today, making them the absolute European leaders in their segments.

Capital cities as diverse as Astana, Baku, Madrid and Paris have chosen natural gas-powered IVECO BUS fleets to transport their citizens. Today, there are some 7,000 gas-powered IVECO BUS products on the world's roads, of which around 5,000 are in Europe. CNH Industrial and IVECO are also working with world governments, such as those of Israel and Japan, and with European countries to develop alternative fuel and natural gas-based technologies and infrastructures.

As a result today IVECO, IVECO BUS and Heuliez Bus are able to offer a full range of methane-powered commercial vehicles and buses which provide all the benefits of natural gas.

ADVANTAGES OF NATURAL GAS

- Performance equal to diesel
- Lower fuel costs compared to diesel
- Reduction of NO_x emissions by up to 98%, and particulate matter weight by 99%
- Decreases CO₂ up to 95% with biomethane*
- Overall air pollution reduction and less engine noise, resulting in an easy low-impact solution for urban areas
- Low infrastructure investments compared to alternatives
- Reduced Total Cost of Ownership
- 1,600 km of autonomy with liquified natural gas for heavy duty commercial ranges

* Note: Well-to-Wheel measure



IVECO S-WAY NP



IVECO Daily



IVECO BUS Crossway

A HISTORY OF INNOVATION

1872 Magirus invents the two-wheel-sliding "Ulmer Ladder"	1903 Magirus produces the first self-driven steam fire pump	1921 Magirus produces "water wagons", the earliest predecessors of tank pumpers	1978 First antilock brake system, forerunner to ABS First light truck with independent front suspension	1985 First light truck with diesel direct injection	1990 First hybrid bus concept
1998 IVECO introduces its first light CNG commercial vehicle	2000 Magirus develops the no-swing turntable ladder with CS (Computer Stabilized) technology	2009 The IVECO Daily Electric enters the market	2015 Magirus launches the world's highest turntable ladder, with working height of 68 meters	2016 IVECO participates in the world's first Truck Platooning Challenge	2017 IVECO launches the first CNG vehicle with an 8-speed automatic gearbox in the LCV industry

HEULIEZ BUS WINS MAJOR ORDER FOR ELECTRIC BUSES

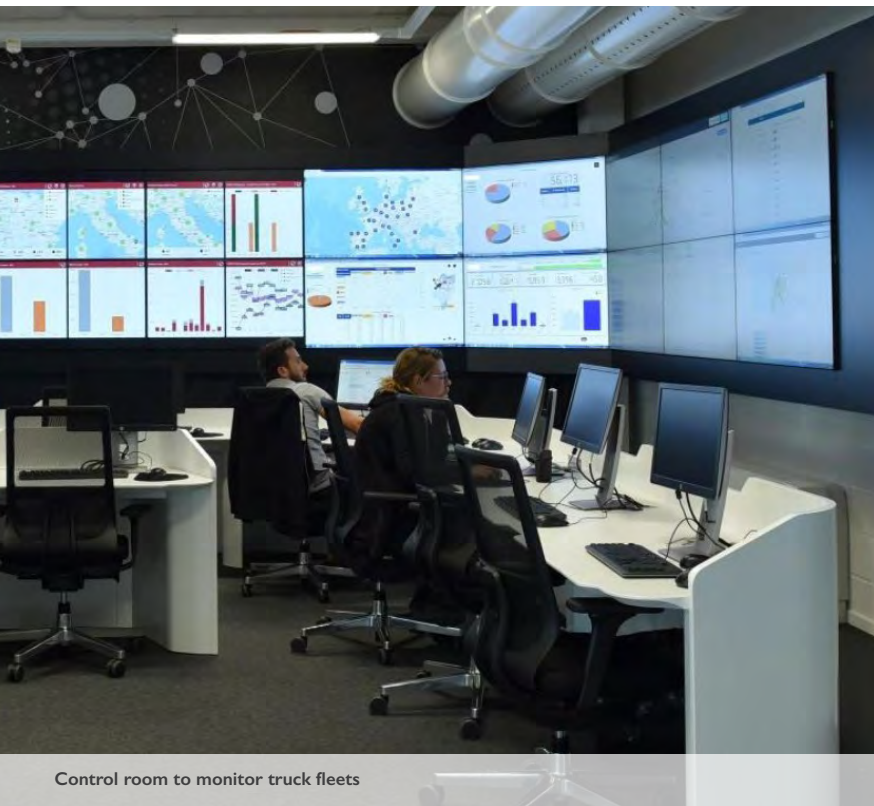
The Parisian transport authority, together with transport operator RATP (Régie Autonome des Transports Parisiens), have selected the 12-meter fully electric GX337 bus from Heuliez Bus for the city's ambitious Bus 2025 plan which will see the city's entire fleet of diesel buses replaced by electric vehicles.

The order, worth €133 million, was signed in May 2019 and is the largest fully electric bus order to date for Heuliez Bus. The vehicles will be delivered over a period of two years starting in 2020. The inclusion of Heuliez Bus in the largest European tender for electric buses to be launched thus far by RATP and financed by IDFM, reinforces the brand's position at the forefront in this specialized field.



CONNECTIVITY IN CONSTRUCTION & COMMERCIAL VEHICLES

Developing connectivity and enhancing digitalization involves creating tools that enable CNH Industrial's brands to offer customers increasingly efficient, sustainable, and intelligent products to support their businesses.



Control room to monitor truck fleets



IVECO Daily Telematics interface



Precision construction - Telematics solution

For Construction equipment, real-time monitoring allows fleet managers to identify inefficiencies and reallocate machines accordingly to improve productivity and reduce CO₂ emissions. For Commercial Vehicles, IVECO customers can access innovative algorithms that increase efficiencies and reduce fuel consumption and CO₂ emissions.

Construction and Commercial Vehicles customers have access to a wide range of tools and services, including:

- Remote assistance services: diagnostic sessions and software updates
- Proactive maintenance: control room reduces the risk of unplanned stops through fault code triggers and analytics
- Smart technology for in-house automation systems, increased sensor usage and advanced automation
- Assisted drive for fully automated finish grading

Through these services customers can get the best out of their vehicle, maximize their time on the road and manage fleets most efficiently, while saving on fuel and maintenance costs.

IVECO LAUNCHES THE S-WAY, THE 100% CONNECTED, DRIVER-CENTRIC LONG HAUL TRUCK

The on-road IVECO S-WAY truck was developed to deliver a complete package of features and services focused on the driver, on sustainability and on an advanced level of connectivity-enabling new customized services. The IVECO S-WAY was launched at a global event held in Madrid in early July 2019.

The new Connectivity box inside the IVECO S-WAY keeps the driver, fleet owner, dealer and IVECO constantly connected, sharing and participating in building the business's profitability. It is designed to support logistics operators and fleet managers by optimizing the vehicle's uptime, fuel efficiency and Total Cost of Ownership (TCO), as well as helping the driver operate effortlessly and efficiently, further enhancing their on-board living and driving experience.

It is linked to the new "Microsoft Azure" cloud-based infrastructure that enables a new range of services, shifting from a reactive to a proactive approach to offer predictive maintenance and service planning.

It puts the vehicle in direct communication with IVECO's Control Room, providing real-time data. IVECO specialists

then monitor the vehicle round-the-clock to maximize the vehicle's uptime and productivity through a proactive approach using alerts triggered by diagnostics trouble codes, the Remote Assistance Service tool for remote diagnostics, teleservices and over-the-air software updates, with the aim of minimizing visits to the dealer's workshop.

The connectivity of the IVECO S-WAY also offers multiple features to help fleet managers optimize their efficiency and reduce their TCO. They can be easily accessed on the MYIVECO portal and app, enabling customers to monitor their vehicle from their desktop computer or on the move from their mobile device. The on-board Driving Style Evaluation (DSE) system generates weekly Smart Reports that include the vehicle's key parameters, the driver's use of predictive functions, and suggestions on how to improve the driving style to optimize fuel consumption and vehicle use. The real-time data provided by the vehicle also enables fleet managers to plan maintenance and repair interventions efficiently to reduce unplanned stops and maximize the life of the monitored components based on the real usage of the vehicle.



IVECO S-WAY



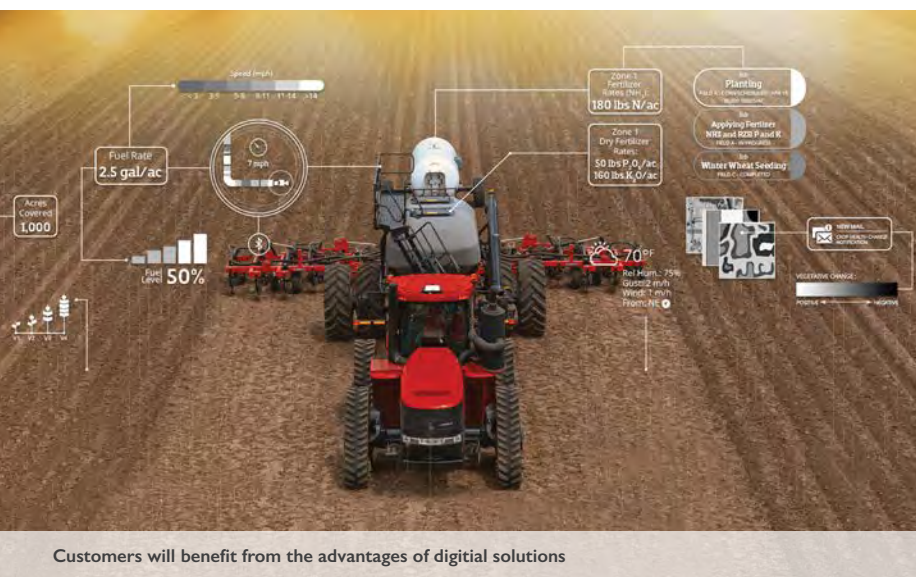
View of the dashboard of the new S-WAY

DIGITIZATION AND PRECISION FARMING

Access to the best technologies and connectivity reinforce sustainable farming, optimizing the use of inputs while assuring safer and more efficient operations with maximum quality and productivity.

“Data availability, from satellite to ground level, is promoting food security for everyone” states Kyle Dooley, Head of Global Data Strategy and Analytics at CNH Industrial. “Today’s growers lie at the intersection of a fundamental shift to digital. With 10 billion people to feed within the next half-century, digital agriculture, precision technologies, and a connected food ecosystem will be the backbone of the secure, sustainable food production the world needs.”

This open data position upholds industry-accepted data formats, file types, and machine communication standards such as ISOBUS for the benefit of the customer. In this respect, the Company has signed a number of strategic partnerships with mobile data management platforms that integrate and visualize in-season agronomic and machine data, while providing key decision support tools for customers.



Customers will benefit from the advantages of digital solutions



New Holland T7.315 Tractor with Auto Command™ continuously variable transmission

AGXTEND™, THE LEADING PLATFORM FOR INNOVATIVE TECHNOLOGIES

AGXTEND™, the new aftermarket brand of CNH Industrial, provides farmers from the company’s agricultural brands, as well as from third parties, with access to a wide range of exclusive farming solutions that enhance productivity and efficiency throughout the entire cropping cycle.

AGXTEND develops and provides groundbreaking technologies from tillage and soil preparation, to seeding,

fertilization, weed control and harvesting.

This comprehensive range includes zero-chemical weed control, real-time soil sensing systems, near-infrared and sensing systems, a biomass sensing package, and the Internet of Things to combine real-time weather sensor data.



CropXplorer sensor for optimized nitrogen balance



SoilXplorer, the real-time soil scanning system



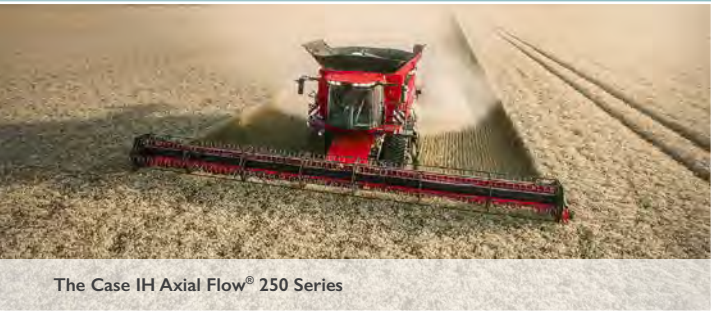
XPower electro-herbicide for zero-chemical weed control

AUTOMATION IN AGRICULTURE

The agricultural segment continues to automate all harvesting processes from forage to crops and grapes, seeing how it can improve productivity, efficiency and produce quality. The use of self-driving and semi-automated equipment, which also can result in reduced downtime, can prevent those driving incidents that are usually due to human error.



Case IH and New Holland Automomous Concept Tractors



The Case IH Axial Flow® 250 Series

Automation not only simplifies the farmer’s tasks, but also results in productivity improvement, since sensor systems on combines improve the machine’s daily output by some 10 up to 20%. Better land management is achieved by the swift development and monitoring of tailored agronomic plans. Moreover, giving farmers easy access to the agronomy often results in better crop quality.



New Holland CR Revelation Combine

INNOVATIONS IN AGRICULTURE

1869

Jerome Case builds the first steam powered tractor

1918

The first Fiat mass produced tractor is built

International Harvester is the first to market power take-off

1932

Fiat markets one of the first mass produced agricultural crawler tractors

1940

New Holland develops the first self-tying pick-up baler

1950s

New Holland introduces Europe’s first self-propelled combine harvester

1974

Sperry New Holland introduces Twin Rotor technology for combine harvesters

1975

Braud develops its first self-propelled grape harvester

1977

International Harvester introduces the Axial-Flow combine

1995

Case IH is among the first to introduce precision farming technology

1997

Case IH launches the Quadtrac, the first tractor on four triangular tracks

2009

New Holland unveils its NH2™ hydrogen tractor and the Energy Independent Farm project

2016

Case IH and New Holland unveil autonomous concept tractors

THE CUSTOMER AT THE CENTER

The Company has a dedicated organization, CNH Industrial Aftermarket Solutions, that complements all of the brands’ commercial offering with a whole range of aftersales services specific to each industrial segment, driven by a customer-centric approach aimed at responding to customers’ needs along the entire machines’ lifecycle.

Aftermarket Solutions ensures long-term value and performance for current and past machines through an extensive variety of new and remanufactured parts, accessories and specific solutions, investing in new state-of-the-art technologies leading the evolving market trends.



A vast array of services, placing the customer at the center, and specific to each segment are provided. They include: advanced digital services aimed at reducing Total Cost of Ownership for the customer; flexible service packages such as personalized service and protection plans and packages for specific vehicle needs; original and remanufactured parts and aftermarket support.



The Company’s 47 parts distribution centers, together with the Brands’ dealerships and service points worldwide, guarantee the timely availability of parts and prompt assistance to enhance customers’ productivity and ensure their full satisfaction.



PROPULSION OF THE FUTURE: CONSTRUCTION

CNH Industrial is a pioneer in the use of alternative propulsion technologies in both on and off-road applications – the latest example of which is the CASE Construction Equipment ProjectTETRA methane powered wheel loader concept.

CASE created a breakthrough in sustainable construction as it revealed in April 2019 the world's first wheel loader which runs entirely on alternative and renewable fuel. The wheel loader concept shifts away from a reliance on the traditional diesel engine, addressing one of the world's most pressing issues – environmental sustainability – with a pragmatic solution for the construction industry.

The concept, jointly developed by CNH Industrial's International Design Center and CASE engineering teams, includes a methane-powered engine, specially designed and developed by FPT Industrial for construction applications. With a maximum 230 hp, it delivers the same power and torque as its equivalent diesel engine found in the CASE 821G wheel loader.

Although sustainability was a huge factor in ProjectTETRA's definition, the design team wanted to showcase the very best of CASE's practical innovation, with the focus firmly on the operator and productivity.



“Automation and digitization were key drivers in our design process. We are a future-focused business, and these are two of our key strategic pillars. These elements are the drivers for safer and more productive machines” stated David Wilkie, Head of Industrial Design at CNH Industrial.

“As the name suggests,” Wilkie continues, “ProjectTETRA contains elements relating to the structure of methane too. The tetrahedral structure of the methane molecule is expressed in the name but also in the design. And we have finished the machine in our custom-made metallic fleck CASE power-tan paint finish. A nod to the heritage of our brand but with a strong link to our innovative and sustainable future.”



CONSTRUCTION MILESTONES

1912 CASE manufactures a complete line of road building equipment, including graders	1957 CASE introduces the first factory-integrated backhoe loader	1958 CASE introduces the first CASE integrated four-wheel drive wheel loader	1969 CASE begins skid steer loader production	1998 CASE is the first manufacturer to offer Ride Control™ on skid steer loaders	2019 CASE presents world's first methane-powered wheel loader at Bauma Exhibition, Munich, Germany
--	--	--	---	--	--



TOP PERFORMANCE, ACHIEVING THE VIRTUOUS CYCLE

Both the CASE concept and the New Holland concept tractor are powered by biomethane, which is produced in biodigesters from waste food, wood chippings and animal waste at waste handling plants or organic waste at farms.

With carbon-neutral production, biomethane provides a closed-loop, virtuous energy cycle, converting waste into useful energy with no compromise in performance against a diesel-powered equivalent.

The methane-powered concept produces up to 95% less CO₂ when running on biomethane*, up to 98% less nitrogen dioxide and 99% lower particulate matter weight than a diesel-powered equivalent. It also achieves a 50% reduction in drive-by noise levels, particularly important in urban situations.

*Note: Wheel to wheel measure

PROPULSION OF THE FUTURE: AGRICULTURE

THE NEW HOLLAND METHANE-POWERED TRACTOR AND THE ENERGY INDEPENDENT FARM

The New Holland methane-powered concept tractor pushes the boundaries of alternative fuel and agriculture technologies to deliver a cutting-edge solution for sustainable and efficient farming.

The tractor, which was recently included in the Good Design Yearbook for 2018/19 for its futuristic design, is powered by a FPT Industrial 6-cylinder NEF methane engine which delivers 180 hp and 740 Nm: the same power and torque as its standard diesel equivalent. It has the same durability and service intervals, and generates up to 30% running cost savings.

The methane powered concept tractor forms a vital link in the virtuous cycle that delivers CO₂ neutral production,

where the Energy Independent Farm™ produces the energy it needs to power its operations, heat farm buildings, and run its equipment. Biomethane as a sustainable fuel is particularly well suited to farms, where there are both the raw materials and the space to house a biodigester to produce the gas.

The New Holland methane powered concept tractor closes the virtuous cycle of the Energy Independent Farm™. It combines visionary design concepts with advanced technologies, extended connectivity and reliable powertrain technology that are already available, fuelling innovation to offer a glimpse into a sustainable future of efficient and productive farming.



The liquid digestate is spread onto the fields as natural fertilizer



The New Holland Methane Power concept tractor refilling a biodigester plant on a farm

IN NUMBERS

54

R&D CENTERS



\$1.1 BILLION
INVESTED IN
R&D IN 2018



11

R&D CENTERS
IN EMERGING
MARKETS



6,000

INDIVIDUALS
DEDICATED TO
INNOVATION



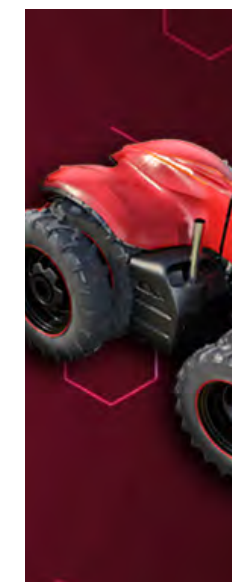
9.3%

OF ALL EMPLOYEES
DEDICATED TO R&D



11,000+

ACTIVE PATENTS
OWNED



Note: all figures provided herein are on a US GAAP \$ basis and as of December 31, 2018 unless otherwise noted. Variations are compared to the previous year.

INNOVATION ACCOLADES

Innovation combines technology and process – it's a mindset, a driver of excellence and a challenge that inspires CNH Industrial to be a leader in every sector in which it operates. The Company's innovative products are technologically advanced, eco-friendly, safe, efficient and ergonomic, with a low total cost of ownership. These attributes have been recognized with a string of industry awards and acknowledgments throughout 2018.

SUSTAINABLE TRUCK OF THE YEAR 2019 IVECO STRALIS NP 460

Vado e Torno magazine with Lifegate

This low-carbon truck is equipped with a natural- gas engine and is the holder of two patents. It has paved the way for long-range missions by significantly increasing fuel autonomy up to 1,600 km on a single fill of its double LNG tank.



SUSTAINABLE BUS OF THE YEAR IVECO BUS Crealis Electric Bus

IAA Commercial Vehicles trade show

This brand new, fully-electric vehicle had its world premiere at the IAA show in Hanover, Germany, and won the prestigious sustainability award for IVECO BUS thanks to its 18 m in-motion charging.



BEST DESIGN 2019 & TRACTOR OF THE YEAR 2019

Case IH Maxxum 145 Multicontroller
EIMA International show

This compact, powerful tractor was recently redesigned to combine style and functionality. It won two awards in Bologna, Italy, for its enhanced operating efficiency, ergonomic design, industry-leading fuel consumption for field work, and impressive functionality.



TOP 100 NEW PRODUCTS OF 2018 CASE Construction Equipment TV370 Compact Track Loader

Construction Equipment magazine

The TV370's operating capacity and vertical-lift design makes it ideally suited for landscaping, utility, agricultural and rental applications where operators value lift capacity and strength.



GOLD INNOVATION AWARD STEYR S-brake System

Austro Agrar Tulln

The patented S-brake trailer braking system was recognized for its innovative safety features that prevent dangerous driving situations. It ensures that when trailers are attached to tractors, they are slowed by their own service brake and that both are stabilized.



POWERBOAT WATER SPEED RECORD FPT Industrial Diesel Cursor 16 Engine

Guinness World Records™

Powerboat-racing world champion Fabio Buzzi reached a record-breaking speed of 277.5 km/h (25.5 km/h above the previous record) on Lake Como, Italy, using a diesel engine developed by FPT Industrial.



AE50 AWARD New Holland CR Revelation Combine Harvester's IntelliSense™ System

American Society of Agricultural and Biological Engineers

This automatic setting system enables the CR Revelation combine to react every 20 seconds, selecting the best action out of 280 million possibilities. An industry first, it delivers significant advantages to customers' productivity, increasing daily output, reducing grain loss and improving grain quality.





SUSTAINABILITY

“

OUR MAIN PRIORITY GOING FORWARD IS TO BOOST CNH INDUSTRIAL'S GLOBAL GROWTH AND PROFITABILITY WHILE MAINTAINING A HIGH LEVEL OF SUSTAINABILITY, AND DELIVERING EVEN GREATER LONG-TERM VALUE IN THIS RESPECT TO ALL OF OUR STAKEHOLDERS.

”

2018 SUSTAINABILITY HIGHLIGHTS

+22%

IN TRAINING
HOURS DELIVERED



\$127.3

MILLION SAVED
THROUGH WCM
PROJECTS



\$83

MILLION SPENT ON
HEALTH AND SAFETY



70.4%

OF ELECTRICITY FROM
RENEWABLE SOURCES



65%

OF PEOPLE INVOLVED
IN HEALTH AND
WELLBEING INITIATIVES



-15.7%

VS 2014 IN KG OF CO₂
EMISSIONS PER TON OF
GOODS TRANSPORTED
(INBOUND, OUTBOUND & SPARE PARTS)



96%

OF PROCUREMENT
SPENDING ON
LOCAL SUPPLIERS



92%

OF WASTE RECOVERED



46%

ON TIER I SUPPLIERS
INVOLVED IN THE
SUSTAINABILITY
ASSESSMENT



-13%

IN CO₂ EMISSIONS PER
HOUR OF PRODUCTION



\$5.8

MILLION INVESTED
IN LOCAL
COMMUNITIES



+15%

IN ACTIVE
PATENTS OWNED



Note: data refers to 2018. Variations are compared with previous year, unless otherwise noted.

COMMITMENT TO SUSTAINABILITY



CNH Industrial's commitment to sustainability is a long-term priority. Sustainability forms a distinctive part of the Company's DNA, and it is a fundamental aspect of the day to day activities of its employees, its supply chain and its logistic and manufacturing processes. It extends also to CNH Industrial's products and innovations and the Company's local communities.

As such, CNH Industrial is taking on the challenge to contribute in supporting a sustainable development in the areas in which it operates.

The Company has set key targets to align with the United Nations' Sustainable Development Goals (SDGs), choosing to concentrate its efforts on the SDGs most relevant to its businesses.

One of the future global challenges that CNH Industrial intends to tackle is offering agricultural products and solutions that promote an economic system with zero impact on resources.



CNH Industrial is committed to promoting the wellbeing of our employees through specific programmes, helping them balance their personal commitments through time and money saving initiatives and flexible working arrangements, while cultivating motivation, pride, and a sense of belonging at work. Moreover, CNH Industrial implements several initiatives for local communities to safeguard and improve health.



CNH Industrial endeavors to ensure optimal working conditions, implementing preventive and protective measures aimed at minimizing risk of injury in the workplace.



CNH Industrial consciously supports projects and activities that encourage the economic, social, and cultural development of local communities. It acts in a socially responsible manner by respecting the culture and traditions of each country, and by operating with integrity and in good faith to earn the trust of the community. Moreover, advocating socially and environmentally responsible behavior across the entire supply chain is one of the Company's primary commitments.



CNH Industrial is committed to creating added value for itself and the communities in which it operates through solutions that are environmentally responsible and economically viable, ensuring the efficient use of resources and reduced environmental impact.



CNH Industrial is actively engaged in reducing CO₂ and other air emissions, while closely monitoring the emissions associated with its manufacturing processes, logistics, and the use phase of its vehicles.



2 ZERO HUNGER

ENHANCED CONNECTIVITY IN BRAZIL

Brazilian agriculture has experienced a significant jump forward in the past 20 years and, since it has become one of the sector's global leaders, the country is striving to bring connectivity to the entire agricultural sector. For this purpose, CNH Industrial, in partnership with seven other companies, has developed ConectarAGRO, an initiative aiming at consolidating and expanding internet access across all of Brazil's agricultural regions.

This system will provide connectivity for the entire farming fleet bringing together equipment, people and other devices under a single system.

This initiative will enable rural producers to fully benefit from today's precision farming, digital and automated technological resources, whilst gaining access to a full range of new products and services enabled by connectivity, which will result in business optimization.

8 DECENT WORK AND ECONOMIC GROWTH

PROMOTING INCLUSION

In 2018, CNH Industrial in collaboration with the NGO Fundación Roncalli Juan XXIII integrated five differently abled workers into the manufacturing area at the Madrid plant. A dedicated training plan was designed for all new hires, while ad hoc initiatives promoting a change in the Company's culture involved everyone at the plant. CNH Industrial is the first industrial company in Spain to have integrated people with cognitive impairments into a production line.

This partnership also led to the launch of Integracamp, an urban summer camp promoting diversity where employees' children can spend time with differently abled people, enjoying activities and workshops together.

In addition, CNH Industrial launched the Voluntary Program with the NGO Fundación Adecco, engaging over 500 employees in activities with differently abled people such as reforestation, recycling and promoting healthy habits through organic foods and sports.

3 GOOD HEALTH AND WELL-BEING

HELP WITH LESSONS IN LIFE

Two projects in India are helping hundreds of disadvantaged people get the skills and education they need and to get the primary health care services to improve their living conditions. They are part of a partnership between New Holland Agriculture and the Smile Foundation, an NGO that matches sponsors with projects.

Since 2016, the Foundation delivers healthcare services through a mobile medical unit, called Smile on Wheels, and is staffed by a doctor or a nurse. The medical unit runs five days a week, and is equipped with first aid kits, preliminary diagnostic kits, and basic medicines. Last year, it served more than 14,000 patients across 18 villages. Since 2016, the unit has helped a total of 54,000 patients.

Last year, this partnership started to support the Mission Education Center in Noida, Uttar Pradesh, India. The mission provides free education for more than 200 children from 4 to 14 years old from underprivileged areas. Since the project began, attendance went up to an average 95%. With more activity-based lessons, extracurricular activities and health checks, the scheme was so successful that 100% of pupils are expected to finish their education, increasing their chances for a brighter future.

10 REDUCED INEQUALITIES

NEW TECHPRO² YOUTH TRAINING PROGRAMS AROUND THE WORLD

TechPro² is a program dedicated to young people, and its aim is to train highly qualified personnel to be placed in the automotive industry. Created in collaboration with the National Center of the Salesian Society - Vocational and Professional Training, the project's purpose is twofold. On the one hand, it meets the need for specialised operators in the dealerships and authorised workshops of the FCA and CNH Industrial brands. On the other, it directs young people who also come from poor social environments and are looking for tangible professional opportunities to the job market.

The Company provides teacher training, and its expertise is then passed on to the students in the classroom. It also offers financial aid and tools for classroom training. The project began in Italy in 2011 and was then extended to various locations in Brazil, Ethiopia, China and South Africa. In all, in 2018, 400 students received classroom and/or on-the-job training through TechPro², for 4,679 training hours.

MANAGING WATER USE IN MANUFACTURING

CNH Industrial has a strategic commitment to sustainably manage the water used in its manufacturing plants.

One of these plants is in Pithampur, India, where in late 2018 a drip-irrigation system was introduced to water the grounds.

The plant has also taken steps to reduce the volume of water used in its canteen and washrooms and to harvest the deluge of rainwater during the monsoon season. In 2019, with the projects at full capacity, the company expects to save the equivalent of enough water to ensure the basic needs of some 500 people for a year.

Also employees at the Plock plant in Poland put in place a number of initiatives to recycle water. They focused on the water used in the painting area and on the reduction of the use of fresh water. They enabled water recirculation and reuse in two manufacturing processes, and they used wastewater for the water curtain in the painting booth.



RECOGNITION AS A SOCIALLY RESPONSIBLE COMPANY

CNH Industrial's ongoing commitment to sustainability and the results it has achieved in this regard have once again ensured the Company's inclusion in some of the world's most prestigious sustainability equity indices.

Inclusion in sustainability indices, and the ratings received from specialized sector-specific agencies, further reflect the robustness of CNH Industrial's sustainable system.

In 2018, CNH Industrial was reconfirmed as Industry Leader in the Dow Jones Sustainability Indices (DJSI) World and Europe for the eighth consecutive year. It received a score of 88/100.

Also in 2018, CNH Industrial ranked among the 31 A-listers in the CDP Water Security program, and scored A- in the CDP Climate Change program, among other acknowledgements.



FTSE4Good



Note: The inclusion of CNH Industrial in any MSCI index, and the use of MSCI logos, trademarks, service marks or index names herein, do not constitute a sponsorship, endorsement, or promotion of CNH Industrial by MSCI or any of its affiliates. The MSCI indexes are the exclusive property of MSCI. MSCI and the MSCI index names and logos are trademarks or service marks of MSCI or its affiliates. Data refers to 2018.



SOLAR SOLUTIONS

To optimize production processes, reduce and monitor energy consumption, and cut waste and CO₂ emissions, last year CNH Industrial developed more than 190 energy-saving projects. Committed to fighting climate change through the use of renewable energies, the company launched the SolarWall and the SmartFlower initiatives.

The SolarWall was installed at the Madrid plant in Spain, and it uses the power of the sun to dramatically reduce energy consumption of heating, ventilation and air-conditioning, and greenhouse gas emissions.

The SmartFlower is an advanced system of solar panels which track and follow the sun and transform its energy into electricity. Moving in response to the sun's position this solar innovation, which works from sunrise to sunset is in use at the Company's Valladolid (Spain), Suzzara (Italy) and Annonay (France) plants. In total, each SmartFlower saved about 2,160 kg of CO₂ in its first nine months of use.

IVECO

AGRICULTURE

The Agricultural segment includes some of the world's most renowned agricultural brands: Case IH, STEYR and New Holland Agriculture.

These brands have shaped the history of the agricultural equipment industry for over 175 years, totaling together over 370 years of experience.

Case IH and New Holland Agriculture are commercialized globally today while STEYR is principally sold as a premium brand in the European market.

Case IH designs and sells equipment for larger grain and cash crop producers,

contractors and specialty producers. New Holland Agriculture offers a wider range of equipment serving livestock, forage, small seed crop, orchard and vineyard businesses. The STEYR brand has a strong presence in the European market and focuses on tractors for municipal and agricultural applications.

All three brands are dedicated to helping the world's agribusinesses produce more crops and livestock to feed the world in an efficient way.



“ WHAT WE USED TO
THINK WAS UNACHIEVABLE
NOW JUST BECOMES
THE NORM WITH
CASE IH ”



Austoft® 8810 Sugar Cane Harvester and Puma® 140 Tractor



Steiger® 540 Quadtrac® Tractor with Precision Air™ 9585 Air Cart and Flex Hoe™ 700 Air Drill



Axial-Flow® 7250 Combine and Magnum™ 380 Tractor



Optum™ 300 Tractor

Instantly identified by its machines' signature red color, Case IH builds upon a tradition of leadership in agricultural equipment which stretches back more than 175 years.

A global provider of powerful, reliable and high performance equipment, for crops ranging from corn to sugarcane, the brand offers a full range of agricultural equipment including tractors, combine harvesters and implements.

Case IH and its employees are dedicated to helping professional farmers overcome the challenges of modern farming by providing industry-leading technologies.



www.caseih.com

PRODUCTS

- Tractors
- Planting & Seeding Equipment
- Combine Harvesters & Headers
- Tillage Equipment
- Windrowers
- Mowers & Conditioners
- Application Equipment
- Balers
- Loaders & Attachments
- Sugarcane & Coffee Harvesters



Trident™ 5550 Combination Applicator

“ MY GUYS GIVE THEIR ALL
EVERY DAY. WHAT THEY
DESERVE IS A PARTNER LIKE
STEYR, WORTHY OF THEIR
PERFORMANCE ”



Since 1947, the STEYR brand's iconic red and white tractors – and orange for municipality – have been synonymous with exceptional quality and reliability. STEYR tractors have not only set innovation benchmarks in their native Austria, but have gone on to achieve growth in many important European markets.

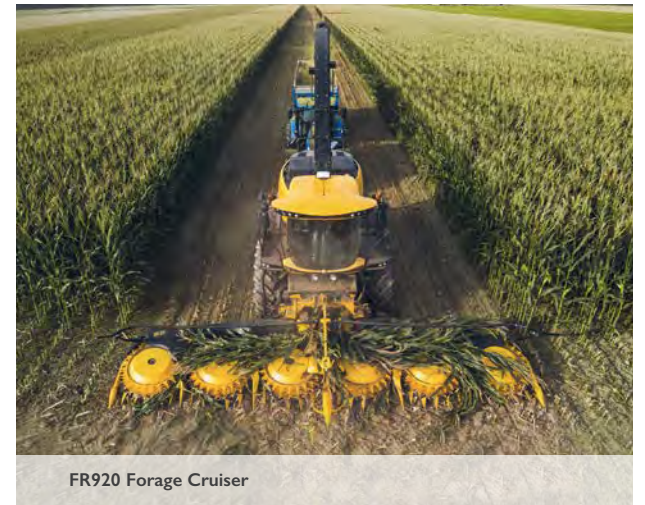
The wide footprint of the brand keeps increasing its size as demonstrated by the latest expansion to Spain, Portugal and Latvia. With its top-of-the-range tractors from 55 to more than 300 horsepower, STEYR offers specialized solutions in agricultural, municipal and forestry segments. Continuous investment in the St. Valentin plant ensures premium “made in Austria” quality for future STEYR customers.

STEYR
TRAKTOREN

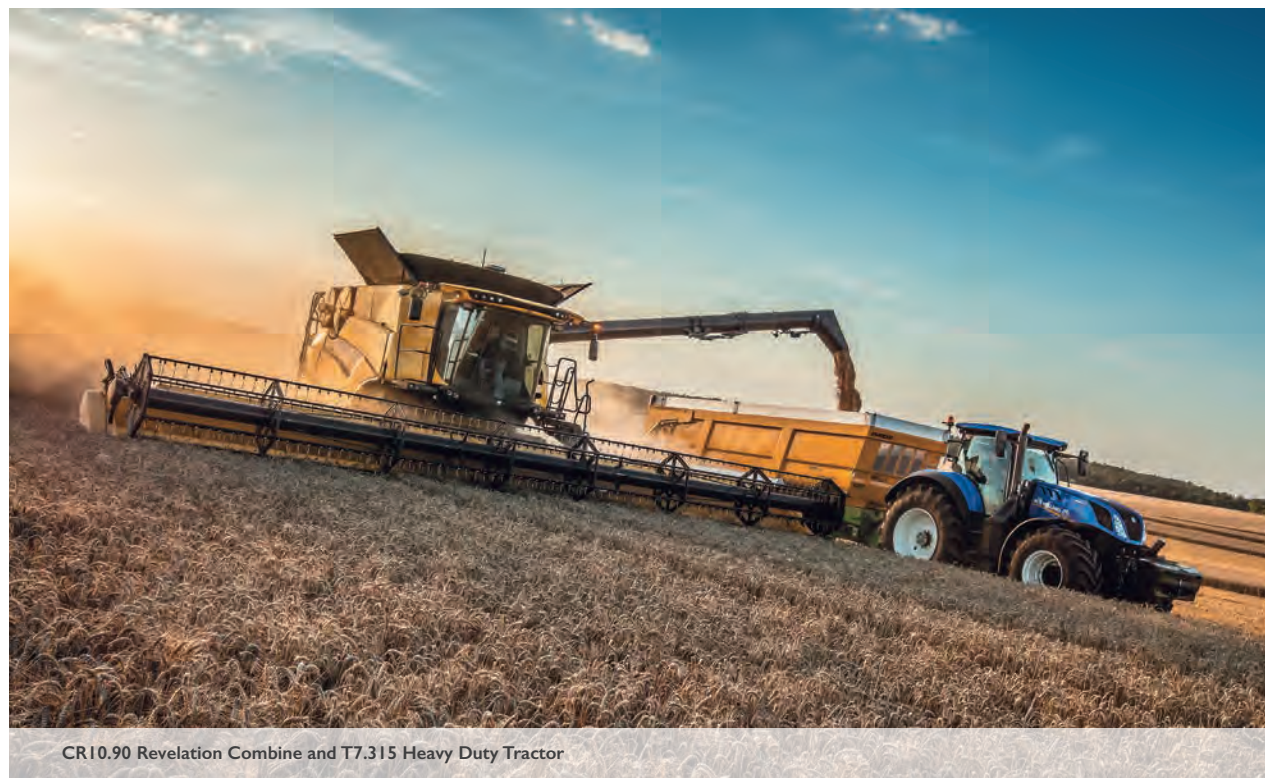
www.steyr-traktoren.com



“ THESE COMBINES DO
EVERYTHING YOU NEED: YOU
CAN'T GO WRONG WITH
THEM BECAUSE THEY ALWAYS
GET IT DONE ”



FR920 Forage Cruiser



CR10.90 Revelation Combine and T7.315 Heavy Duty Tractor

Since 1895, New Holland has been the dependable partner the world's farmers and growers can rely on to get innovative, efficient and productive farming solutions.

Since 2006, with the Clean Energy Leader® strategy, New Holland supports sustainable agricultural technologies and practices. With more than 100 product lines and over 400 models, New Holland has the widest agricultural equipment offering in the world.

New Holland is open and responsive, ready to understand customer's changing needs and on hand to help farmers simply get the job done.



www.newholland.com



Braud 9090L Grape Harvester



Genesis® T8.435 Auto Command™ Tractor with PLM™ Intelligence



T6.175 Dynamic Command™ Tractor

PRODUCTS

- Agricultural Tractors
- Haytools & Spreaders
- Forage Equipment
- Combine Harvesters & Headers
- Grape & Olive Harvesters
- Spraying Equipment
- Ploughs
- Tillage & Seeding Equipment
- Utility Vehicles



CONSTRUCTION

The Construction segment includes two of the most instantly recognizable brands both of which have a deep heritage: CASE Construction Equipment and New Holland Construction.

CASE and New Holland Construction are global manufacturers of construction equipment, with a wide range of products and solutions that include crawler excavators, wheeled loaders, dozers, backhoe loaders, compactors, motor graders and other support products.

CASE is a full-liner operating across all markets worldwide, competing in heavy

and compact applications. The focus of New Holland Construction is as a compact line player in North America, Europe and specific regions in Asia, the Middle East, Africa and Oceania. In South America, both brands offer products across both heavy and compact applications due to their complementary heritage and product range.

Globally, the brands are focused on providing innovative, safe and reliable equipment to those who build and rebuild our world.



“ OUR INNOVATION
SOLUTIONS ARE DESIGNED
TO SOLVE REAL-WORLD
CHALLENGES IN A SIMPLE,
STRAIGHTFORWARD WAY ”



1021G Wheel Loader

In the business of earth moving for more than 175 years, CASE sells and supports a full line of construction equipment around the world, including the first ever factory integrated backhoe loader right through to today’s excavators, motor graders, wheel loaders, vibratory compaction rollers, crawler dozers, skid steers, compact track loaders and rough-terrain forklifts.

CASE dealers support the brand purpose to help build communities by distributing world-class equipment, aftermarket support, industry-leading warranties and flexible financing.



www.casece.com



580N EP Backhoe Loader



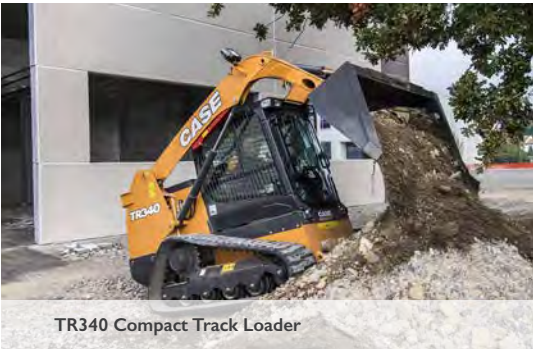
1107 EX-D Compactor

PRODUCTS

- Backhoe Loaders
- Compact Track Loaders
- Compaction Equipment
- Dozers
- Excavators
- Forklifts
- Motor Graders
- Skid Steer Loaders
- Tractor Loaders
- Wheel Loaders

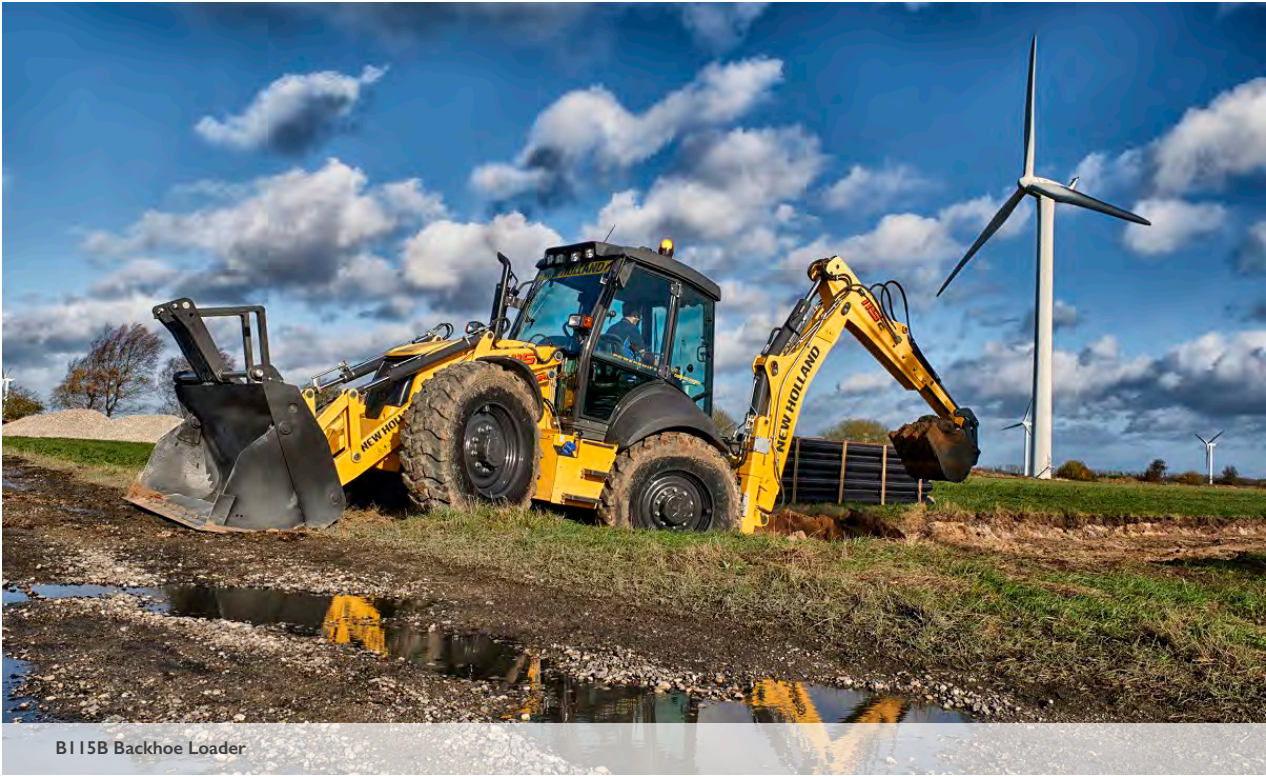


CX750D Excavator



TR340 Compact Track Loader

“ OUR CUSTOMERS
AND PARTNERS ARE
LIKE FAMILY. WE VALUE
THEIR SUCCESS
AS OUR OWN ”



BI15B Backhoe Loader



RG200B Motor Grader

PRODUCTS*

- Crawler Excavators
- Wheel Loaders
- Motor Graders
- Dozers
- Backhoe Loaders
- Skid Steer Loaders
- Telehandlers
- Mini Excavators

*Full range available in Brazil



L220 Skid Steer Loader



E26C Mini Excavator

New Holland Construction brings together the strength and resources of its worldwide commercial, industrial and finance organizations.

Thanks to the experience of its foundation heritage brands, New Holland can proudly point to quality, technologically state-of-the-art products that are fully compliant with safety standards and environmental regulations.



www.newholland.com



12D EVO Wheel Loader

COMMERCIAL & SPECIALTY VEHICLES

The Commercial and Specialty Vehicles segment has a history which spans some 150 years, and has witnessed the change from horse drawn carriages to the most advanced commercial vehicles of today.

This segment comprises the widest commercial vehicle offering and includes numerous renowned brands: IVECO, IVECO ASTRA, IVECO BUS, Heuliez Bus, Magirus and Iveco Defence Vehicles.

Decades of technological leaps, strategic mergers and acquisitions, culminated in 1975 with the creation of IVECO, an acronym for Industrial Vehicles Corporation, today a global manufacturer of light, medium and heavy commercial vehicles, and the first manufacturer to offer a full range of natural gas models in its range.

IVECO ASTRA specializes in heavy duty trucks for the most demanding working conditions, such as construction and mining sites.

IVECO BUS offers a complete range of buses and coaches, while the Heuliez Bus brand leads in the French urban bus market.

This segment also comprises Magirus, the fire-fighting and rescue equipment provider; and Iveco Defence Vehicles for defense and civil protection applications.

Continuous efforts to be at the forefront in the sectors in which they operate by adopting best-in-class technological innovations are proof of a strong commitment to efficient mobility and are common to all brands.



“ WITH ITS RANGE OF INTEGRATED VEHICLES AND SERVICES, IVECO IS REDEFINING THE TRANSPORT INDUSTRY ”



Daily



S-WAY NP



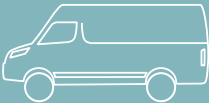
S-WAY



Eurocargo

PRODUCTS

	ON-ROAD	OFF-ROAD
LIGHT	Daily 3.3 > 7.2 t	Daily 3.3 > 7 t
MEDIUM	Eurocargo 6.5 > 18 t	Eurocargo 11.5 > 15 t
HEAVY	S-WAY 16+ t	Trakker 16+ t
	X-WAY 16+ t	X-WAY 16+ t



A global manufacturer of light, medium and heavy commercial vehicles, IVECO designs, manufactures and markets a wide range of light, medium and heavy commercial vehicles for road and off-road use.

The key players in the brand’s product line-up are the Daily light commercial vehicle range with Gross Vehicle Range from 3.3 to 7.2 tons; the Eurocargo in the segment from 6 to 18 tons, and the IVECO WAY heavy range over 16 tons, which includes the new IVECO S-WAY for on-road missions; the off-road Trakker, also over 16 tons.

Committed to safe, efficient and sustainable mobility, IVECO has been investing in the development of alternative drive systems for over 20 years. It offers engines running on diesel and natural gas on its entire range, as well as the Daily Electric.

IVECO

www.iveco.com



Daily Blue Power

“ WHEN THE
CHALLENGE IS TAKEN
TO THE EXTREME
IVECO ASTRA COMES
INTO PLAY ”



HD9 86.56 Dumper



HD9 84.50 CE Dumper



HD9 84.44

PRODUCTS

HD9 / HHD9 up to 560 hp

APPLICATIONS

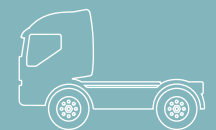
MINING

OIL & GAS

CONSTRUCTION

HEAVY HAULAGE

VOCATIONAL



A premium manufacturer of construction and mining equipment, IVECO ASTRA has 70 years' experience building machines for the global construction sector.

It develops robust, reliable and versatile trucks that include heavy trucks for heavy missions of over 60 ton gross vehicle weight and specialized vehicles.

These vehicles are customized to meet specific client needs and are built to operate on challenging and remote work sites such as quarries and mines. Emission levels are in line with the best technologies of the Group for off-road vehicles.

**IVECO
ASTRA**

www.iveco-astra.com



HHD9 86.48



HD9 86.50

“ TODAY,
A BUS CAN BE
THE PRINCIPAL
SOLUTION TO
URBAN POLLUTION ”



Evadys



Crealis



Crossway NP

PRODUCTS

CITY	Crealis	12 > 18 m
	Urbanway	10.5 > 18 m
INTERCITY	Crossway	10.8 > 13 m
COACH	Evadys	12.1 > 12.8 m
	Magelys	12 > 13 m
MINIBUS	Daily Minibus	5.9 > 7.5 m



One of the major European manufacturers in the collective passenger transport sector, IVECO BUS is steadily expanding its activities globally with a presence in more than 40 countries.

The brand offers a complete range of vehicles for transporting people: from urban and intercity buses to tourism coaches and mini-buses.

IVECO BUS promotes ongoing synergies with both public and private players in the transport sector and is highly committed to sustainable mobility and to the development of a low-carbon Public Transport system, offering a full range of alternative fuels and tractions.



www.ivecobus.com

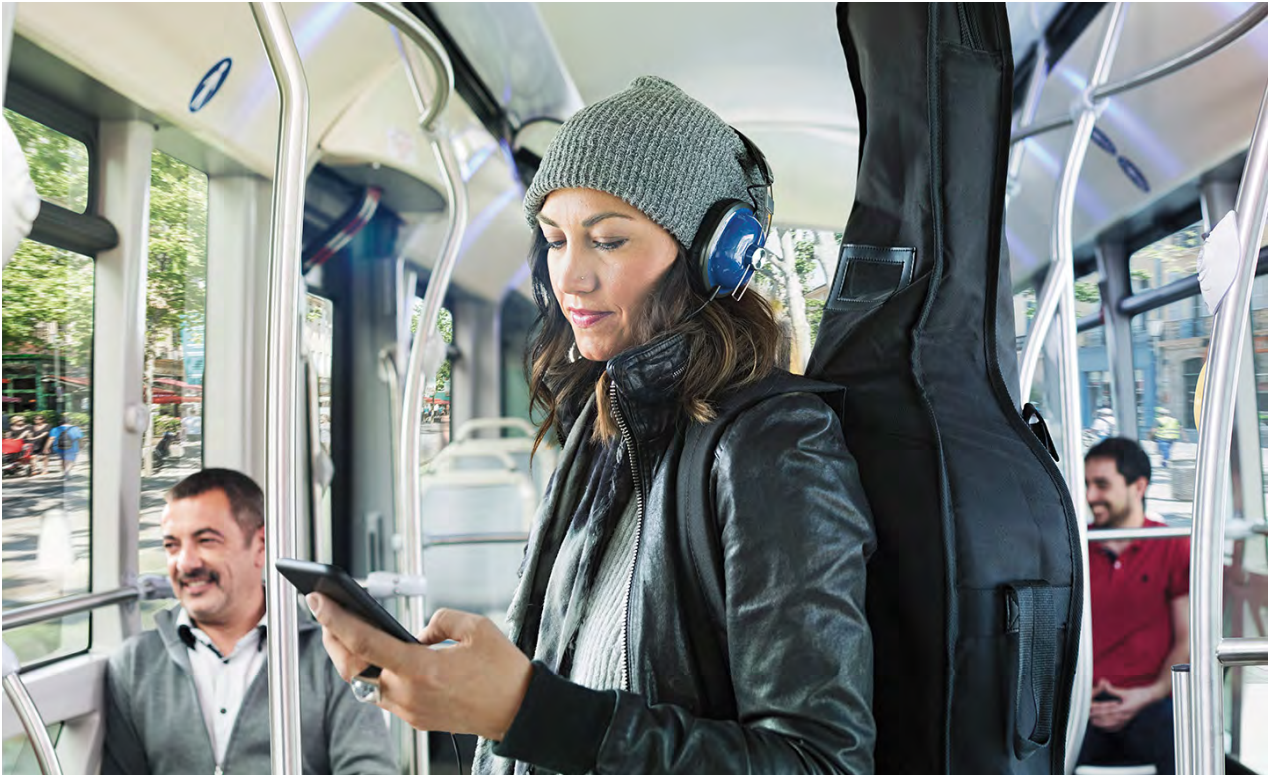


Daily Minibus



Magelys

“ CONTRIBUTING
TO A CLEAN CITY,
THEY ARE REALLY
IMPROVING
PASSENGERS’ LIVES ”



GX 437 ELEC LINIUM



GX 337 ELEC LINIUM



GX 337 ELEC LINIUM

PRODUCTS

Electric GX ELEC	12 > 18 m
Hybrid GX HYBRID	12 > 18 m
CNG GX CNG	12 m
Thermal GX DIESEL	9.5 > 18 m
BHNS GX LINIUM	12 > 18 m



Creativity, excellence and commitment: these are the strengths of this premium French bus manufacturer.

Founded more than 90 years ago by Louis Heuliez, the brand started off by manufacturing coaches, later adding urban transport buses to its portfolio.

From there, Heuliez Bus has continued to grow, becoming a leader in the French market and continuing to expand its reach throughout Europe.

The brand offers a full electric line-up of city buses with some 200 units sold to date.



www.heuliezbus.com



GX 337 HYBRID

“ WHEN YOU NEED
THE GREATEST SAFETY
YOU CAN GET,
THERE'S NO ROOM
FOR COMPROMISE ”



M68L

An international authority on firefighting and disaster control vehicles, Magirus provides tailored solutions to firefighters around the world.

Founded in 1864 by German fire chief and pioneer Conrad Dietrich Magirus, the inventor of the turntable ladder, the company has continuously shaped the firefighting industry and the approach to firefighting.

Continuous innovation and commitment to excellence have distinguished the company since its inception. With its highly reliable product range and innovative solutions, Magirus is a global leader in its field and the partner of choice for firefighters in the most challenging missions.



www.magirusgroup.com



From small and medium pumpers to large tank pumpers

PRODUCTS

Turntable Ladders
height 27 > 68 m

Fire Engines 4 > 40 t

Logistic Rescue Vehicles 11 > 16 t

Airport Fire Engines 19 > 52 t

Special Vehicles



AirCore TAF35 Firefighting Robot



DRAGON X6



FIRE 1500 Portable Fire Pump

“ IT’S THE
LEADER IN
PROTECTION ”



Iveco Defence Vehicles is dedicated to delivering innovative special purpose vehicles for defense and civil protection applications. The brand manufactures logistic, multirole and armored vehicles at its facility in Northern Italy, as well as marketing IVECO's full commercial range, adapted as necessary to meet the demands of military and civil defense users worldwide.

All vehicles are designed to offer exceptional mobility, with protected variants exploiting state-of-the-art protection technologies. Among these, the Light Multirole Vehicle (LMV) has become the light protected vehicle of choice in Europe, with sales to fourteen countries to date.

IVECO
DEFENCE VEHICLES

www.ivecodefencevehicles.com



PRODUCTS

Armored Vehicles 15 > 30 t

Logistic & Tactical Trucks 3.5 > 60 t

Multirole Vehicles 3.5 > 18 t



POWER TRAIN

More than 150 years of experience make FPT Industrial a technological and market leader in the powertrain field.

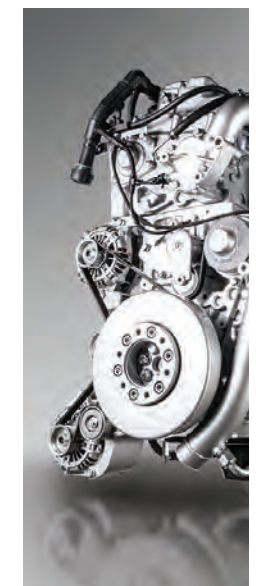
FPT Industrial was established in 2005 by merging all the engine, transmission and axle operations of IVECO, CASE and New Holland. The Company inherited their competence and developed key solutions such as the HI-eSCR EGR-free after-treatment solution.

FPT Industrial is leading the efforts to produce cleaner, more efficient and more powerful engines and is in the vanguard of sustainable engineering, providing a test-bed for next generation industrial engineering.

It is the leader in the introduction of common rail diesel engines and the first to introduce turbocharging technology on diesel engines, maintenance free emission reduction systems and a range of other breakthrough technologies.

Ongoing work on alternative fuels and engine management systems will lead to further improvements in fuel consumption.

This puts FPT Industrial in pole position as demand grows for vehicles to become cleaner and more sustainable, without sacrificing performance.



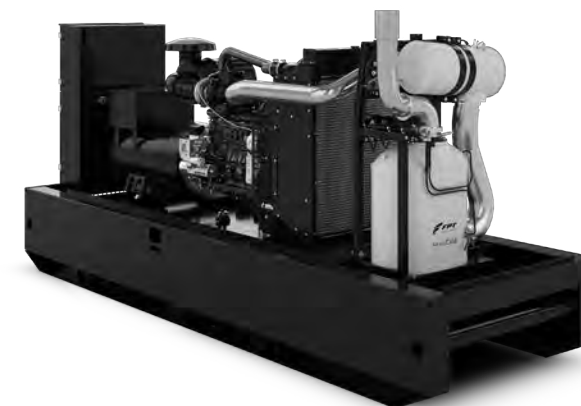
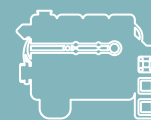
“ WE
ENGINEER
EFFICIENCY ”

PRODUCTS

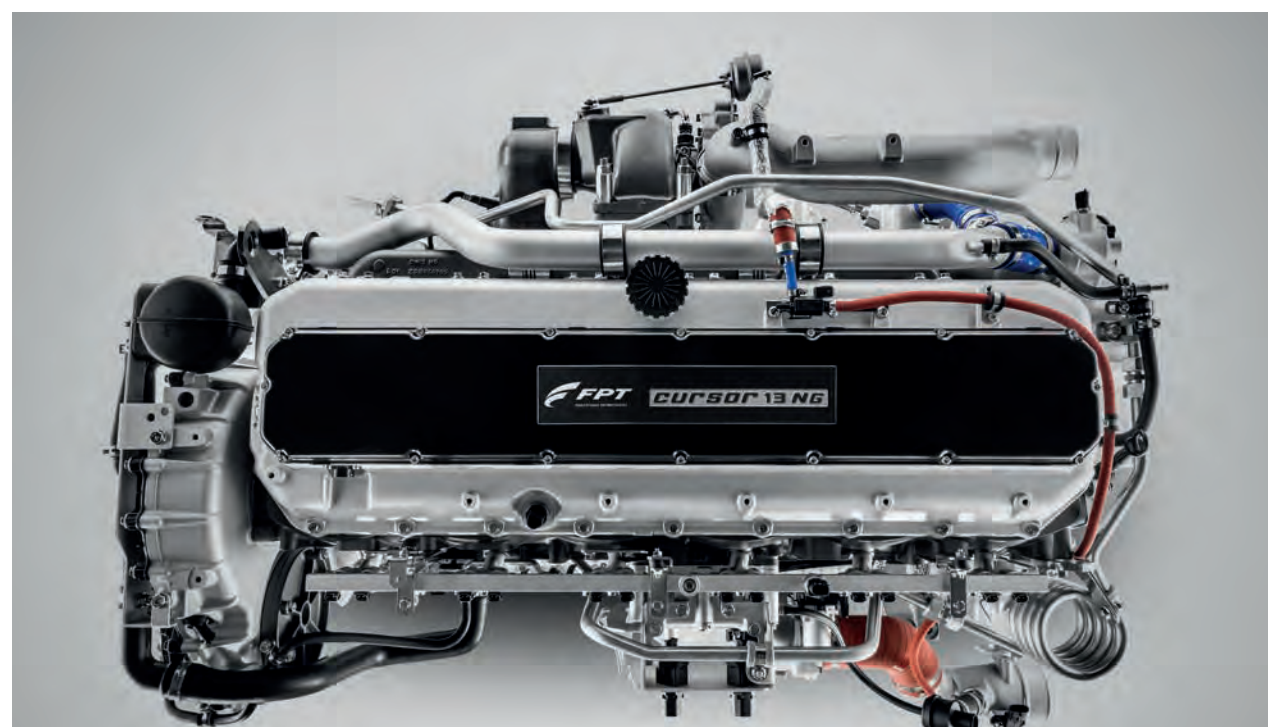
Engines 42 > 1,006 hp

Transmissions
200 > 500 Nm max. torque

Axles 2 > 32 t GAW



N67 200kW Stage V



Cursor 13 NG



V20 Off-Road



N45 Off-Road

FPT Industrial is dedicated to the design, production and sale of powertrains for on and off-road vehicles, marine and power generation applications, as well as axles and transmissions.

The brand numbers more than 8,000 people worldwide, at ten manufacturing plants and seven R&D Centers. The FPT Industrial sales network consists of more than 70 dealers and about 800 service centers in almost 100 countries.

A wide product offering, including six engine ranges from 42 up to 1,006 horsepower, transmissions with maximum torque of 200 Nm up to 500 Nm, front and rear axles from 2 to 32 ton GAW (Gross Axle Weight). This extensive offer and a close focus on R&D activities make FPT Industrial a world leader in industrial powertrains.



www.fptindustrial.com



C16 1000



FINANCIAL SERVICES

Deciding on a CNH Industrial brand machine or vehicle is just the beginning of the journey: CNH Industrial relies on its captive financial services organization to help customers make the right choice with complete peace of mind.

With over 50 years of experience, building strong and successful

relationships, CNH Industrial Capital offers a wide range of finance and leasing solutions to the CNH Industrial family of brands' customers, dealers and distributors in agricultural and construction equipment and for trucks and commercial vehicles.



“ WITH SUCH
FLEXIBLE SOLUTIONS,
I’M ABLE TO WORK
WITH COMPLETE PEACE
OF MIND ”



CNH Industrial Capital is a global Financial Services player in the Agricultural, Construction Equipment and Commercial & Specialty Vehicles segments.

CNH Industrial Capital operates around the Globe with more than \$26 billion in Managed Assets (including unconsolidated joint ventures).

CNH Industrial Capital supports the CNH Industrial brands’ customers and dealers with a dedicated suite of financial solutions through various wholly owned subsidiaries, joint ventures and vendor programs around the world.



www.cnhindustrialcapital.com



CANADA

- Regina
- Saskatoon, Saskatchewan
- Toronto

USA

- Benson, Minnesota
- Burr Ridge, Illinois
- Burlington, Iowa
- Cameron, Missouri
- Doraville (Atlanta), Georgia
- Fargo, North Dakota
- Grand Island, Nebraska
- Greenville (Dallas), Texas
- Goodfield, Illinois
- Lebanon, Indiana
- Litchfield, Arizona
- Mount Joy, Iowa
- Mountville, Pennsylvania
- New Holland, Pennsylvania
- Portland, Oregon
- Racine, Wisconsin
- Sacaton, Arizona
- San Leandro, California
- Springfield, Missouri*
- St Nazianz, Wisconsin
- Wichita, Kansas

MEXICO

- Querétaro*

BRAZIL

- Belo Horizonte
- Cuiabá
- Curitiba
- Piracicaba
- Sete Lagoas
- Sorocaba

ARGENTINA

- Cordoba
- Buenos Aires

FRANCE

- Annonay
- Bourbon-Lancy
- Coex
- Croix
- Etampes
- Fecamp
- Garchizy
- Le Plessis
- Rorthais
- Tracy-le-Mont
- Trappes
- Venissieux

BELGIUM

- Antwerp
- Zedelgem

SWEDEN

- Överum

GERMANY

- Heidelberg
- Langenau
- Ulm

CZECH REPUBLIC

- Vysoké Mýto

AUSTRIA

- Graz
- St.Valentin

POLAND

- Kutno
- Plock
- Zielona Gora

RUSSIA

- Miass*
- Moscow
- Naberezhnye Chelny

UKRAINE

- Kiev

UNITED KINGDOM

- Basildon
- Daventry

SPAIN

- Madrid
- Valladolid

SWITZERLAND

- Arbon

ITALY

- Bolzano
- Brescia
- Foggia
- Jesi
- Lecce
- Modena
- Piacenza
- Pregnana Milanese
- San Matteo
- San Mauro
- Suzzara
- Turin
- Vittorio Veneto

UAE

- Dubai

ETHIOPIA

- Addis Ababa*

TURKEY

- Ankara*
- Erenler*
- Istanbul

UZBEKISTAN

- Tashkent*

SOUTH AFRICA

- Centurion
- Rosslyn*

INDIA

- Greater Noida
- Indore
- Pithampur
- Pune

THAILAND

- Bangkok*

PAKISTAN

- Dera Ghazi Khan*

JAPAN

- Sapporo*

KOREA

- Gwangju

CHINA

- Chongqing*
- Chongqing*
- Foshan
- Harbin
- Nanjing (Qiaolin)*
- Urumqi
- Shanghai

AUSTRALIA

- Brisbane
- Dandenong (Melbourne)
- Perth
- St. Marys (Sydney)
- Mannum**

Manufacturing Plants

- Agriculture
- Construction
- Commercial & Specialty Vehicles
- Powertrain
- R&D Center
- Parts Depot

* Joint Venture
** Assembly Site

Locations as of December 31, 2018

CONTACTS

Corporate Communications

mediarelations@cnhind.com

Investor Relations

investor.relations@cnhind.com

Sustainability

sustainability@cnhind.com

Website

www.cnhindustrial.com



CNH Industrial N.V.

Global Corporate Communications Publications

25 St. James's Street, London, SW1A 1HA,

United Kingdom

www.cnhindustrial.com